

# Alaska Department of Fish and Game

Habitat Section  
Southeast Region



## 114-33-10210-2002-3011 Tributary 1

## ADDITION

**Water body name:**

**Survey date:** 9/13/2022

**Quad:** Juneau A-6

**Species & Lifestage:**

**Upper Reach Latitude:** 58.049164 **Longitude:** -135.799882

**Survey crew:** EF, RR

**Lower Reach Latitude:** 58.050727 **Longitude:** -135.798760

**Findings:** We surveyed this uncataloged stream using baited minnow traps and GPS and captured juvenile coho salmon. The tributary stream flows from a seep, through a 4 ft wide culvert, and proceeds down a channel dominated by fine organic and small gravel substrate (Table 1; Figures 1–3).

**Recommendations:** Add this uncataloged stream to the anadromous waters catalog for rearing coho salmon (Figure 4).

**Nomination:** Pending

Table 1.–114-33-10210-2002-3011 tributary 1 survey data.

Waypoint	Latitude	Longitude	Notes	Stream Width ft	Stream Substrate	Habitat Features	Gradient %	Sample Effort	Sample Results
1768	58.049168	-135.799902	48" CMP, slightly imbedded at outlet. Culvert is in good condition. Channel above inlet is primarily a seep and is low quality habitat.	1-2	Fine Organic Small Gravel		0-1	MT	4 CO



Figure 1.–Culvert outlet at waypoint 1768.



Figure 2.—Juvenile coho salmon captured at waypoint 1768.



Figure 3.—Channel at waypoint 1768.



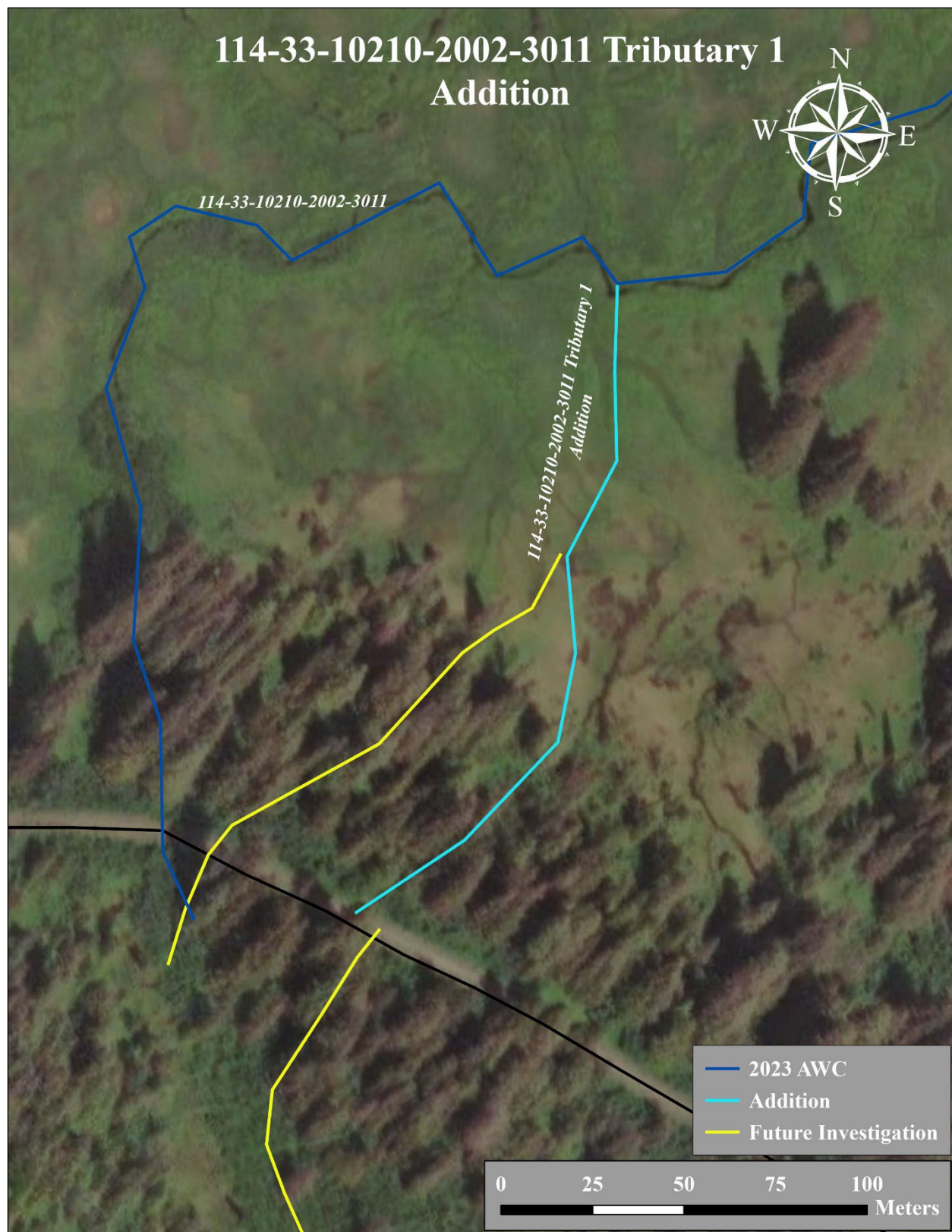


Figure 4.—114-33-10210-2002-3011 tributary 1 addition map.